

ITI TK 250 - K14

Kule Vinç

* Grua Torre

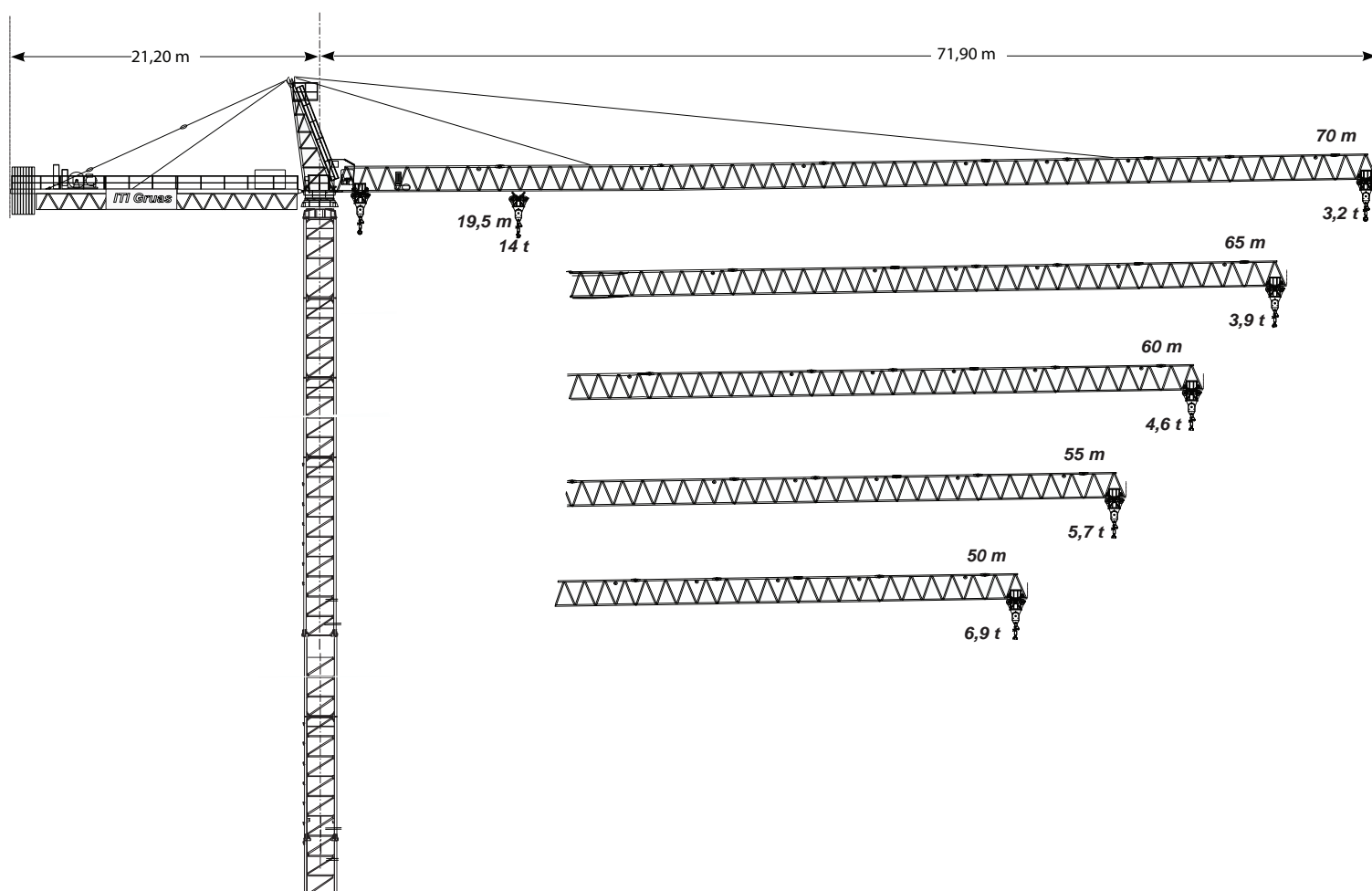
* Grua à Tour

* Tower Crane

* Grúa Torre

* Gru a Torre

* Turmdrehkran



CE FEM 1.001 A3

As especificações e os preços do produto são sujeitos a mudança sem obrigação de informação. As fotografias e/ou os desenhos neste original têm somente finalidades ilustrativas. Consulte o manual de instruções apropriado para o uso deste equipamento. Seguir todas as instruções indicadas no manual quando usar o equipamento porque um acto irresponsabilidade pode resultar em ferimento ou morte. A única garantia aplicável a nosso equipamento é a garantia escrita padrão aplicável particularmente ao produto e venda e a Irmãos Tavares 2 mais nenhuma outra garantia é expressa ou implicada. Os produtos e os serviços alistados podem ser marcas registradas, marcas de serviço de Irmãos Tavares 2 e/ou suas subsidiárias em Portugal e outros países e todos os direitos são reservados.

Product specifications and prices are subject to change without notice or obligation. The photographs and/or drawings in this document are for illustrative purposes only. Refer to the appropriate Operator's Manual for instructions on the proper use of this equipment. Failure to follow the appropriate Operator's Manual when using our equipment or to otherwise act irresponsibly may result serious injury or death. The only warranty applicable to our equipment is the standard written warranty applicable to the particular product and sale and Irmãos Tavares 2 makes no other warranty, express or implied. Products and services listed may be trademarks, service marks or trade-names of Irmãos Tavares 2 and/or its subsidiaries in the Portugal and other countries and all rights are reserved.

ITI TK 250 - K14

Kule Vinç

* Diagrama de cargas

* Curvas de carga

* Courbes de charges

* Load diagram



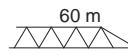
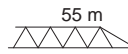
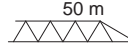
* Lastkurven

* Diagramma di portata

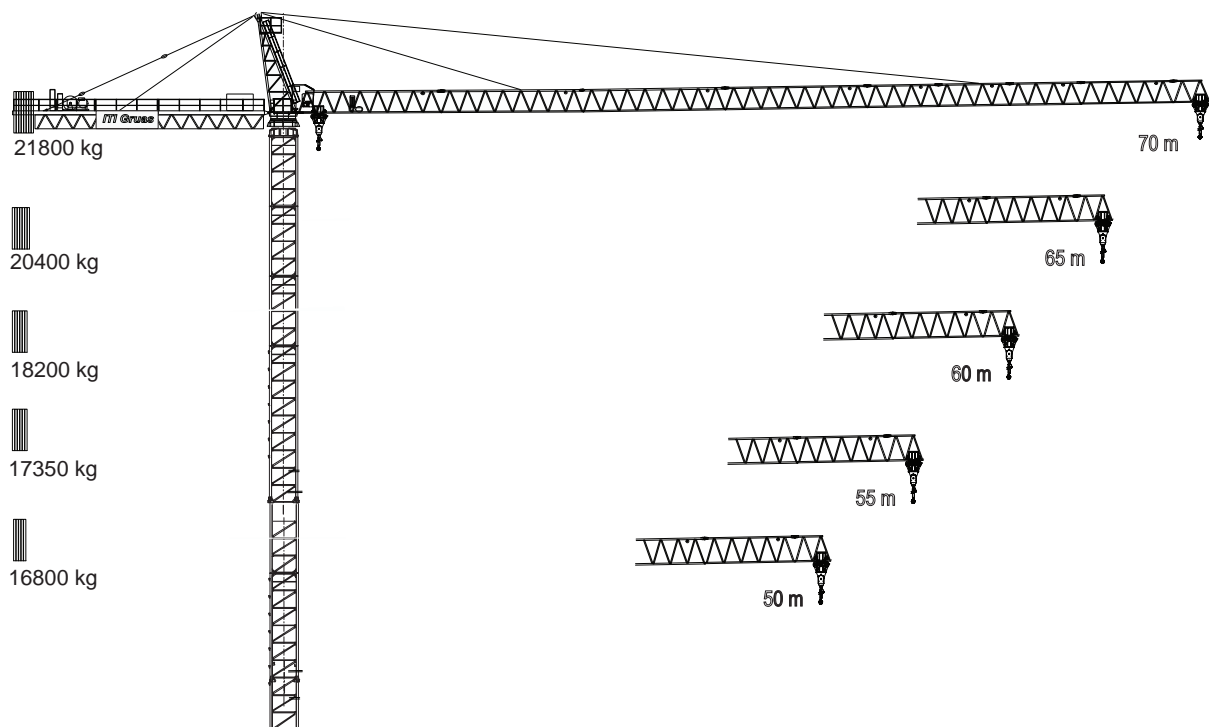
* 负载图

* مخطط الاحمال

* Диаграмма нагрузок

	19,5 m 14000 kg	22 m 12000 kg	30 m 8160 kg	37 m 6990 kg	42 m 6000 kg	45 m 5540 kg	52 m 4650 kg	55 m 4340 kg	57 m 4150 kg	60 m 3890 kg	65 m 3510 kg	70 m 3200 kg
	20,9 m 14000 kg	27 m 13200 kg	30 m 9080 kg	37 m 6970 kg	42 m 6700 kg	45 m 6400 kg	52 m 5180 kg	55 m 4830 kg	57 m 4620 kg	60 m 4340 kg	65 m 3930 kg	
	22,5 m 14000 kg	27 m 11200 kg	30 m 9030 kg	37 m 7660 kg	42 m 7000 kg	45 m 6710 kg	50 m 5920 kg	52 m 5650 kg	47 m 5070 kg	60 m 4750 kg		
	24 m 14000 kg	27 m 11600 kg	30 m 10700 kg	37 m 8290 kg	42 m 7070 kg	47 m 6580 kg	50 m 6390 kg	52 m 6100 kg	55 m 5700 kg			
	25,5 m 14000 kg	27 m 13100 kg	32 m 10700 kg	37 m 9610 kg	42 m 7760 kg	47 m 7000 kg	50 m 6890 kg					

COUNTER WEIGHT DIAGRAM



ITI TK 250K 14

Kule Vinç

* Torre

* Torre

* Tour

* Tower

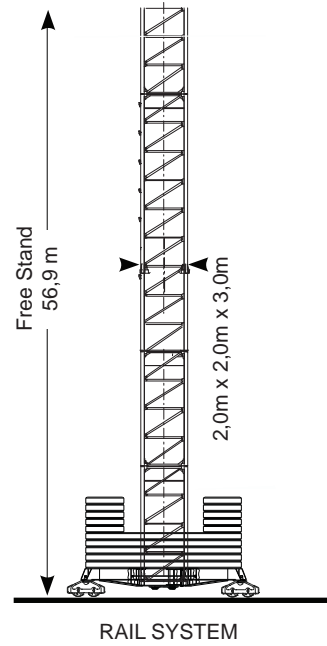
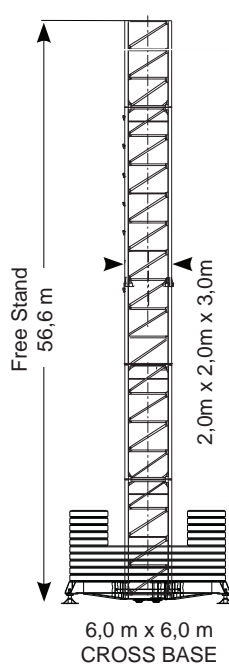
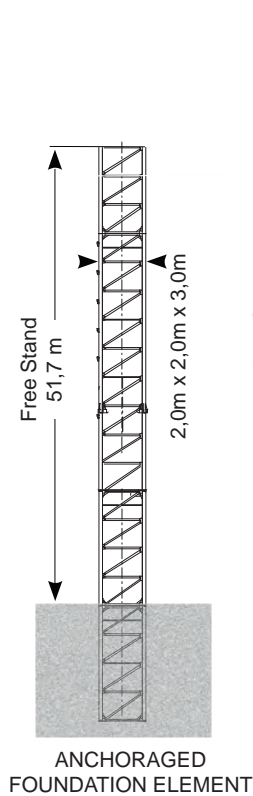
* Turm

* Torre

* 吊塔

* برج

* Башня



* Outras configurações

* Otras implantaciones

* Austres implantations

* Other configurations

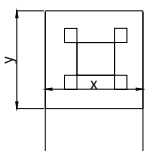
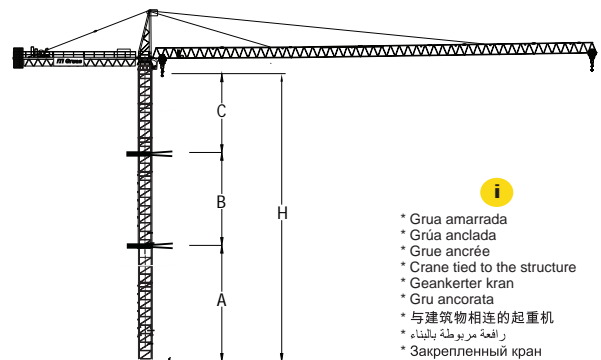
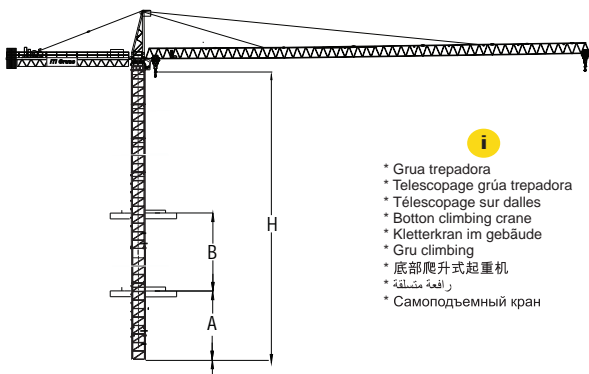
* Aufstellmöglichkeiten

* Altre installazioni

* 其他配置

* تشكيلات اخرى

* Прочие конфигурации



i

- * Consulte-nos
- * Consultarnos
- * Nous consulter

- * Consult us
- * Auf anfrage
- * Consultateci

- * 联系我们
- * استشرنا
- * Свяжитесь с нами

ITI TK 250 - K14

Kule Vinç

* Mecanismos * Mechanisms * 机构
 * Mecanismos * Antriebe * الآلية
 * Mécanismes * Mecanismi * Механизмы

								kW	hP	
	9fd	m/min	0-22	0-44	0-60	0-11	0-22	0-30	55	73
		load	7000 kg	3500 kg	1750 kg	14000 kg	7000 kg	3500 kg		
	11fd	m/min	0-56	0-112	0-168	0-28	0-56	0-84	90	120
		load	7000 kg	3500 kg	1750 kg	14000 kg	7000 kg	3500 kg		
	0-55 m/min								4	5,5
	0-0,76 RPM								2X9	2x12
	0-32								4X5,2	4X7

CEI 38	IEC 38	kVA	
400V (+6% -10%) 50Hz		9fd : 100KVA - 11fd : 140KVA	2000 / 14 / CE



* Elevação
 * Elevación
 * Levage

* Distribuição
 * Distribución
 * Distribution

* Rotação
 * Orientación
 * Orientation

* Translação
 * Traslación
 * Translation

* Translação
 * Traslación
 * Translation

* Potência necessária
 * Potencia necesaria
 * Puissance totale nécessaire

* Directiva sobre nível acústico
 * Directiva sobre el nivel acustico
 * Directive sur le niveau acoustique

* Hoisting
 * Heben
 * Sollevamento

* Trolleying
 * Katzfahren
 * Traslazione carrello

* Slewing
 * Schwenken
 * Rotazione

* Travelling
 * Schienenfahren
 * Traslazione

* Travelling
 * Schienenfahren
 * Traslazione

* Power requirements
 * Geforderte stromstärke
 * Potenza totale richiesta

* Directive on noise level
 * Richtlinie für den schall-leistungspegel
 * Direttiva sul livello acustico

* 起吊
 * الارتفاع
 * Подъем

* 变幅
 * الحامل المتحرك
 * Перемещение тепежки

* 回转
 * وحدة الادارة
 * Скорость вращения

* 行走
 * السكة الناقلة
 * Перемещение

* 行走
 * السكة الناقلة
 * Перемещение

* 电力要求
 * متطلبات الطاقة
 * Необходимая мощность

* 噪音水平指令
 * توجيهات حول مستوى الضوضاء
 * Директива по уровню шума



ITI GRUAS MACHINERY CO.LTD.
 Birlik Mah. 4.Cad 17/2 Çankaya Ankara
 Tel : 0090 312 496 29 83
 Fax : 0090 312 495 13 66
 Email : info@groupiti.com

www.itigruas.com

