

ITI TK 140-H10

Kule Vinç

* Grua Torre

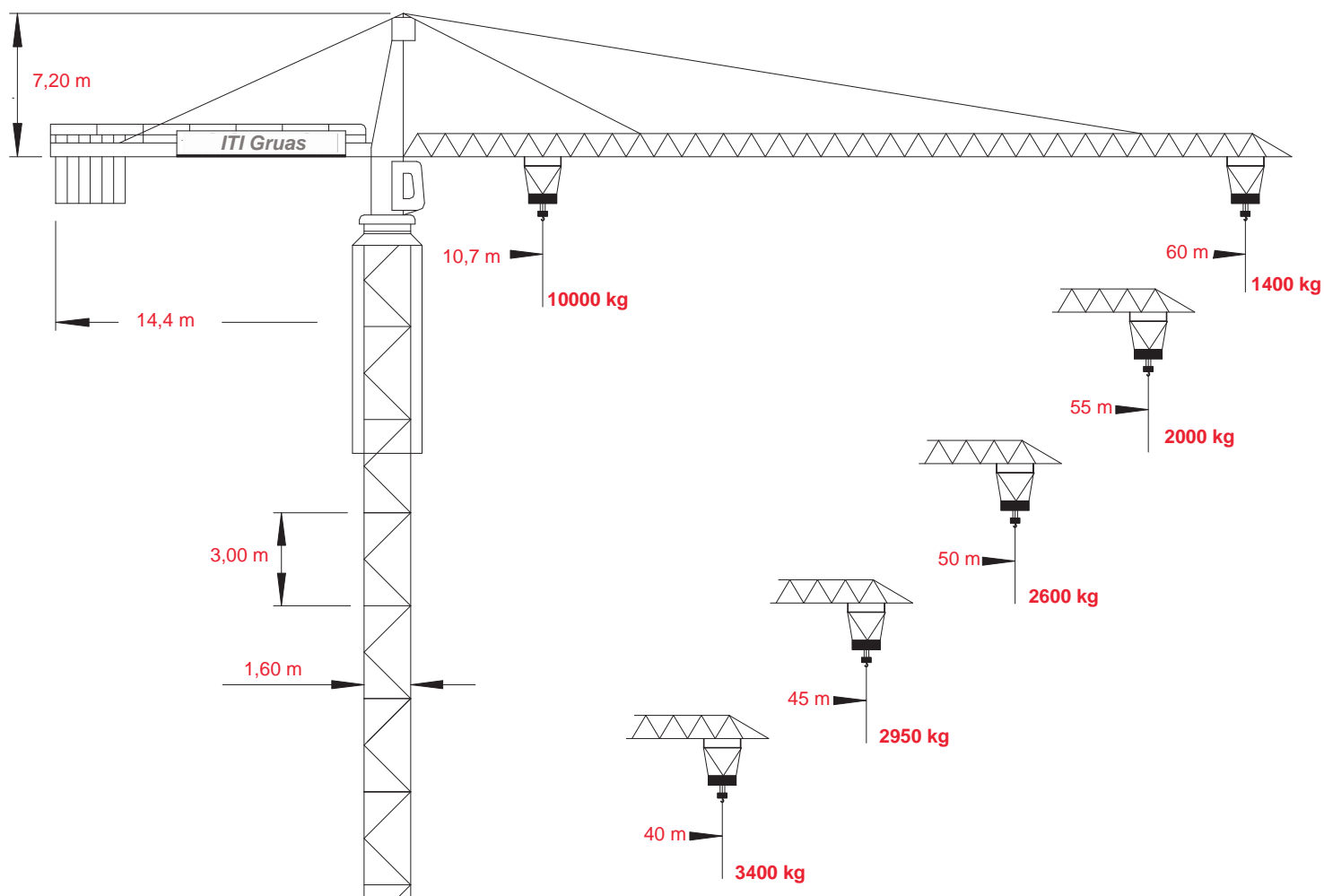
* Grua à Tour

* Tower Crane

* Grúa Torre

* Gru a Torre

* Turmdrehkran



CE FEM 1.001 A3

As especificações e os preços do produto são sujeitos a mudança sem obrigação de informação. As fotografias e/ou os desenhos neste original têm somente finalidades ilustrativas. Consulte o manual de instruções apropriado para o uso deste equipamento. Seguir todas as instruções indicadas no manual quando usar o equipamento porque um acto irresponsabilidade pode resultar em ferimento ou morte. A única garantia aplicável a nosso equipamento é a garantia escrita padrão aplicável particularmente ao produto e venda e a ITI Gruas mais nenhuma outra garantia é expressa ou implicada. Os produtos e os serviços alistados podem ser marcas registradas, marcas de serviço de ITI Gruas e/ou suas subsidiárias em Portugal e outros países e todos os direitos são reservados.

Product specifications and prices are subject to change without notice or obligation. The photographs and/or drawings in this document are for illustrative purposes only. Refer to the appropriate Operator's Manual for instructions on the proper use of this equipment. Failure to follow the appropriate Operator's Manual when using our equipment or to otherwise act irresponsibly may result serious injury or death. The only warranty applicable to our equipment is the standard written warranty applicable to the particular product and sale and ITI Gruas makes no other warranty, express or implied. Products and services listed may be trademarks, service marks or trade-names of ITI Gruas and/or its subsidiaries in the Portugal and other countries and all rights are reserved.

ITI TK 140-H10

Kule Vinç

* Diagrama de cargas

* Curvas de carga

* Courbes de charges

* Load diagram

* Lastkurven

* Diagramma di portata






* 负载图

* مخطط الاحمال

* Диаграмма нагрузок

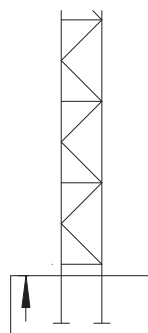
	10,7 m 10000 kg	15 m 6800 kg	20 m 4900 kg	25 m 3800 kg	30 m 3000 kg	35 m 2500 kg	40 m 2100 kg	42 m 1900 kg	45 m 1700 kg	50 m 1500 kg	55 m 1300 kg	60 m 1100 kg
	12,8 m 10000 kg	15 m 8400 kg	20 m 6000 kg	25 m 4700 kg	30 m 3800 kg	35 m 3200 kg	40 m 2700 kg	42 m 2500 kg	45 m 2300 kg	50 m 2000 kg	55 m 1700 kg	
	14,4 m 10000 kg	15 m 9600 kg	20 m 6900 kg	26,8 m 5000 kg	30 m 4400 kg	35 m 3400 kg	40 m 3100 kg	42 m 2900 kg	45 m 2700 kg	50 m 2300 kg		
	14,4 m 10000 kg	15 m 9600 kg	20 m 6900 kg	26,8 m 5000 kg	30 m 4400 kg	35 m 3700 kg	40 m 3100 kg	42 m 2900 kg	45 m 2650 kg			
	14,4 m 10000 kg	15 m 9600 kg	20 m 6900 kg	26,8 m 5000 kg	30 m 4400 kg	35 m 3700 kg	40 m 3100 kg					

COUNTER WEIGHT DIAGRAM

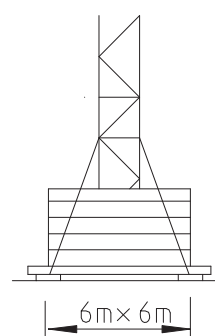
15500 kg	
14800 kg	
16100 kg	
14300 kg	
13600 kg	

BASE TYPES

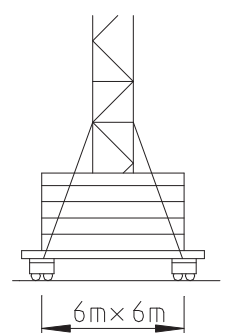
ANCHORAGED



CROSS BASE



RAIL SYSTEM



ITI TK 140-H10

Kule Vinç

* Mecanismos

* Mechanisms

* 机构

* Mecanismos

* Antriebe

* الآلية

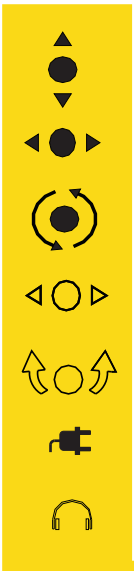
* Mécanismes

* Mecanismi

* Механизмы

								kW	hP	
	4fd	m/min	0-34	0-64	0-94	0-17	0-32	0-47	45	60
		load	5000 kg	2500 kg	1250 kg	10000 kg	5000 kg	2500 kg		
	5fd	m/min	0-40		0-80	0-20		0-40	51,5	69
		load	5000 kg		2500 kg	10000 kg		5000 kg		
	6fd	m/min	0-74	0-136	0-200	0-37	0-68	0-100	75	100
		load	5000 kg	2500 kg	1250 kg	10000 kg	5000 kg	2500 kg		
	0-55 m/min							4	5,5	
	0-0,7 RPM							2x5	2x6,7	
	0-30							4x4	4x5,5	

CEI 38	IEC 38		
400V (+6% -10%) 50Hz		4fd - 75 kVA	5fd - 80 kVA 6fd - 105kVA
			2000 / 14 / CE



* Elevação
* Elevación
* Levage

* Hoisting
* Heben
* Sollevamento

* 起吊
* الارتفاع
* Подъем

* Distribuição
* Distribución
* Distribution

* Trolleying
* Katzfahren
* Traslazione carrello

* 变幅
* الحامل المتحرك
* Перемещение тепежки

* Rotação
* Orientación
* Orientation

* Slewing
* Schwenken
* Rotazione

* 回转
* وحدة الادارة
* Скорость вращения

* Translação
* Traslación
* Translation

* Travelling
* Schienenfahren
* Traslazione

* 行走
* السكة الناقلة
* Перемещение

* Translação
* Traslación
* Translation

* Travelling
* Schienenfahren
* Traslazione

* 行走
* السكة الناقلة
* Перемещение

* Potência necessária
* Potencia necesaria
* Puissance totale nécessaire

* Power requirements
* Geforderte stromstärke
* Potenza totale richiesta

* 电力要求
* متطلبات الطاقة
* Необходимая мощность

* Directiva sobre nivel acústico
* Directiva sobre el nivel acustico
* Directive sur le niveau acoustique

* Directive on noise level
* Richtlinie für den schall-leistungspegel
* Direttiva sul livello acustico

* 噪音水平指令
* توجيهات حول مستوى الضوضاء
* Директива по уровню шума



ITI GRUAS MACHINERY CO.LTD.
Birlik Mah. 4.Cad 17/2 Çankaya Ankara
Tel : 0090 312 496 29 83
Fax : 0090 312 495 13 66
Email : info@groupiti.com



www.itigruas.com

