

ITI TK 55 - G13

Kule Vinç

* Grua Torre

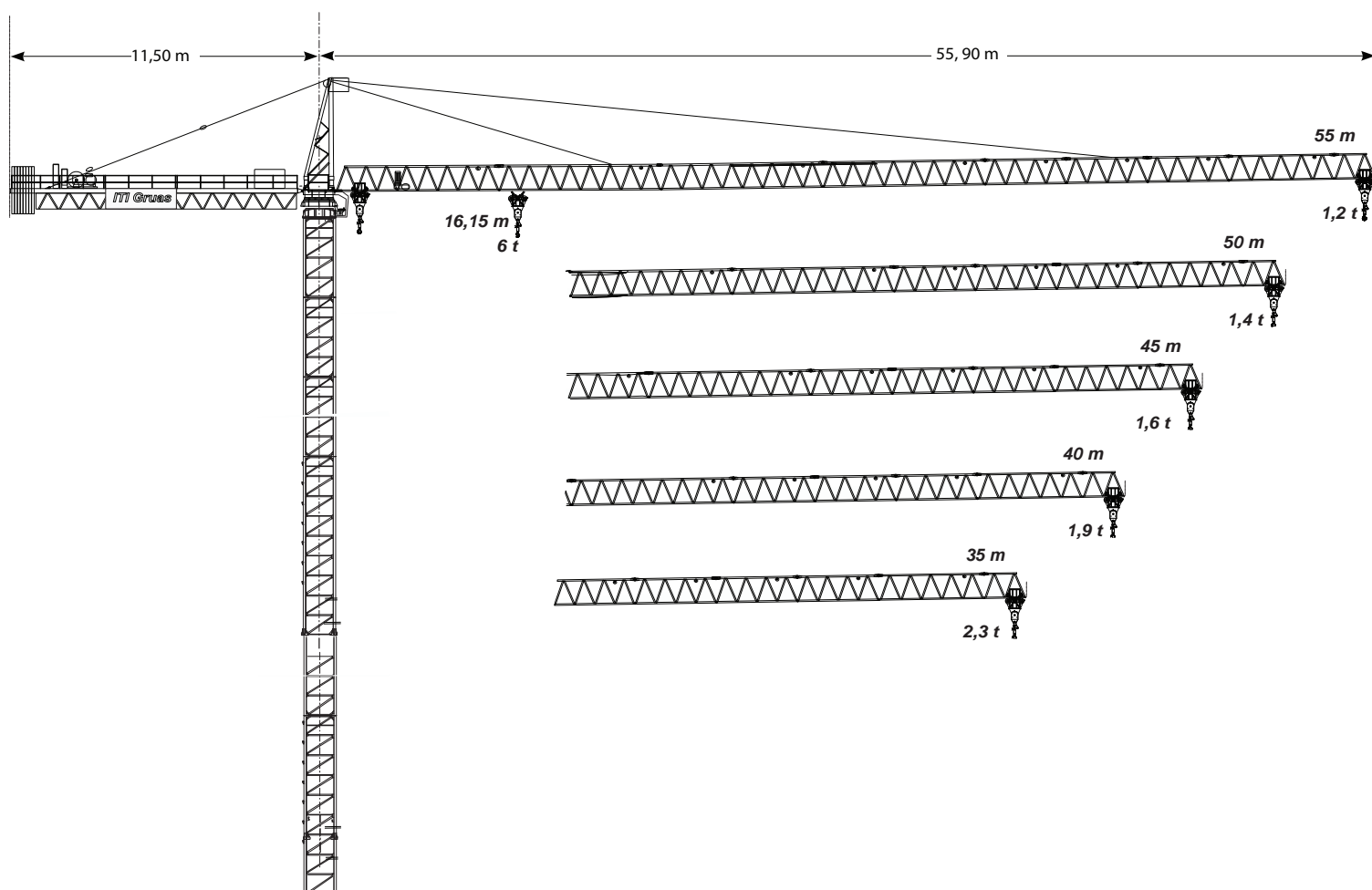
* Grua à Tour

* Tower Crane

* Grúa Torre

* Gru a Torre

* Turmdrehkran



CE FEM 1.001 A3

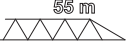
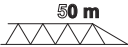


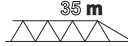
As especificações e os preços do produto são sujeitos a mudança sem obrigação de informação. As fotografias e/ou os desenhos neste original têm somente finalidades ilustrativas. Consulte o manual de instruções apropriado para o uso deste equipamento. Seguir todas as instruções indicadas no manual quando usar o equipamento porque um acto irresponsabilidade pode resultar em ferimento ou morte. A única garantia aplicável a nosso equipamento é a garantia escrita padrão aplicável particularmente ao produto e venda e a Irmãos Tavares 2 mais nenhuma outra garantia é expressa ou implicada. Os produtos e os serviços alistados podem ser marcas registradas, marcas de serviço de Irmãos Tavares 2 e/ou suas subsidiárias em Portugal e outros países e todos os direitos são reservados.

Product specifications and prices are subject to change without notice or obligation. The photographs and/or drawings in this document are for illustrative purposes only. Refer to the appropriate Operator's Manual for instructions on the proper use of this equipment. Failure to follow the appropriate Operator's Manual when using our equipment or to otherwise act irresponsibly may result serious injury or death. The only warranty applicable to our equipment is the standard written warranty applicable to the particular product and sale and Irmãos Tavares 2 makes no other warranty, express or implied. Products and services listed may be trademarks, service marks or trade-names of Irmãos Tavares 2 and/or its subsidiaries in the Portugal and other countries and all rights are reserved.

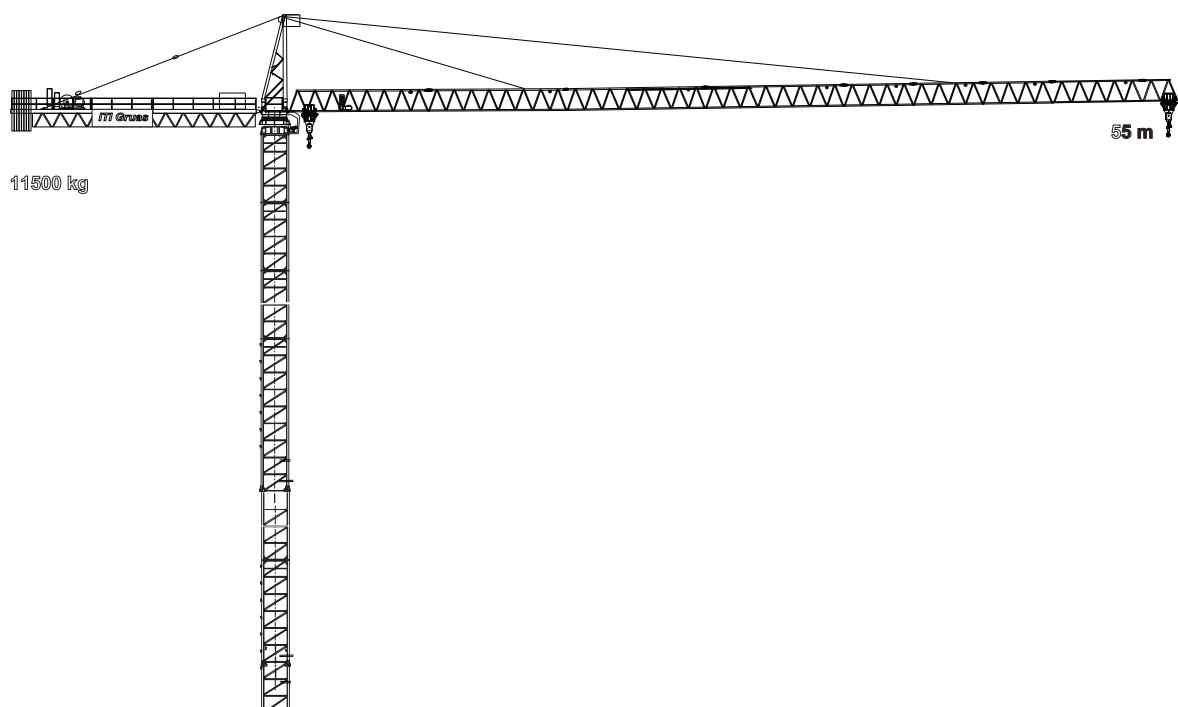
ITI TK 55 - G13

Kule Vinç

- * Diagrama de cargas * Load diagram 负载图
- * Curvas de carga * Lastkurven منحنى الاحمال
- * Courbes de charges * Diagramma di portata Диаграмма нагрузок

 55 m	16,15 m 6000 kg	15 m 6000 kg	20 m 4650 kg	26 m 3370 kg	30 m 2590 kg	35 m 2300 kg	40 m 1920 kg	45 m 1630 kg	50 m 1400 kg	55 m 1200 kg
 50 m	16,15 m 6000 kg	15 m 6000 kg	20 m 4650 kg	26 m 3370 kg	30 m 2590 kg	35 m 2300 kg	40 m 1920 kg	45 m 1630 kg	50 m 1400 kg	
 45 m	16,15 m 6000 kg	15 m 6000 kg	20 m 4650 kg	26 m 3370 kg	30 m 2590 kg	35 m 2300 kg	40 m 1920 kg	45 m 1630 kg		
 40 m	16,15 m 6000 kg	15 m 6000 kg	20 m 4650 kg	26 m 3370 kg	30 m 2590 kg	35 m 2300 kg	40 m 1920 kg			
 35 m	16,15 m 6000 kg	15 m 6000 kg	20 m 4650 kg	26 m 3370 kg	30 m 2590 kg	35 m 2300 kg				

COUNTER WEIGHT DIAGRAM



ITI TK 55 - G13

Kule Vinç

* Torre

* Torre

* Tour

* Tower

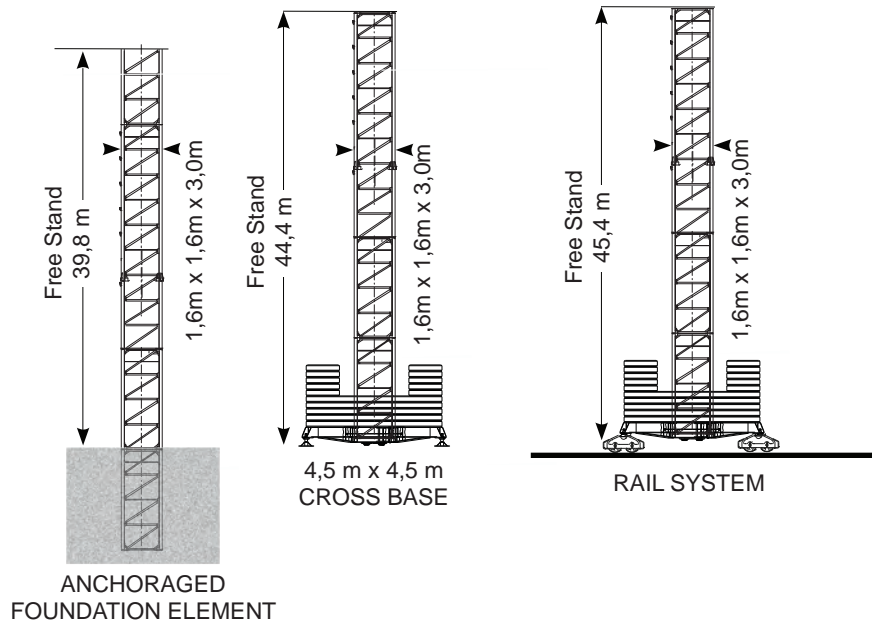
* Turm

* Torre

* 吊塔

* برج

* Башня



* Outras configurações

* Otras implantaciones

* Austres implantations

* Other configurations

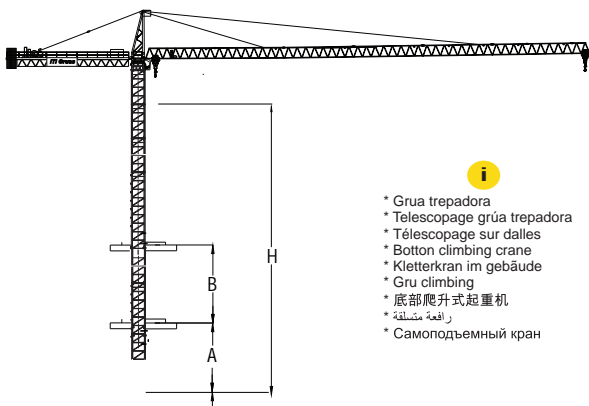
* Aufstellmöglichkeiten

* Altre installazioni

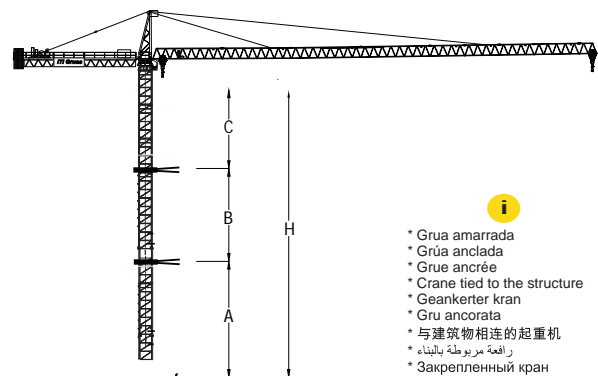
* 其他配置

* تشكيلات اخرى

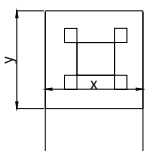
* Прочие конфигурации



* Grúa trepadora
* Telescopage grúa trepadora
* Télescopage sur dalles
* Bottom climbing crane
* Kletterkran im gebäude
* Grúa climbing
* 底部爬升式起重机
* رافعة متسلقة
* Самоподъемный кран



* Grúa amarrada
* Grúa anclada
* Grue ancrée
* Crane tied to the structure
* Geankter kran
* Grúa ancorata
* 与建筑物相连的起重机
* رافعة مربوطة بالبناء
* Закрепленный кран



i

* Consulte-nos
* Consultarnos
* Nous consulter

* Consult us
* Auf anfrage
* Consultateci

* 联系我们
* استشرنا
* Свяжитесь с нами

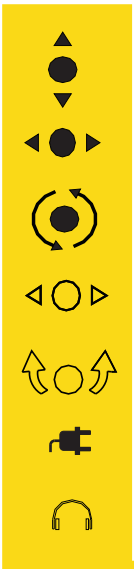
ITI TK 55 - G13

Kule Vinç

- * Mecanismos * Mechanisms * 机构
 * Mecanismos * Antriebe * الآلية
 * Mécanismes * Mecanismi * Механизмы

								kW	hP	
	4fd	m/min	9,6	40	80	4,35	20	40	24	32
		load	3000 kg	3000 kg	1500 kg	6000 kg	6000 kg	3000 kg		
	15-38-58 m/min							4	5,5	
	0-0,7 RPM							2x5	2x6,7	
	12,5/25							4x4	4x5,5	

CEI 38	IEC 38	kVA	
400V (+6% -10%) 50Hz		4fd - 75 kVA 5fd - 80 kVA 6fd -105kVA	2000 / 14 / CE



* Elevação
 * Elevación
 * Levage

* Distribuição
 * Distribución
 * Distribution

* Rotação
 * Orientación
 * Orientation

* Translação
 * Traslación
 * Translation

* Translação
 * Traslación
 * Translation

* Potência necessária
 * Potencia necesaria
 * Puissance totale nécessaire

* Directiva sobre nível acústico
 * Directiva sobre el nivel acustico
 * Directive sur le niveau acoustique

* Hoisting
 * Heben
 * Sollevamento

* Trolleying
 * Katzfahren
 * Traslazione carrello

* Slewing
 * Schwenken
 * Rotazione

* Travelling
 * Schienenfahren
 * Traslazione

* Travelling
 * Schienenfahren
 * Traslazione

* Power requirements
 * Geforderte stromstärke
 * Potenza totale richiesta

* Directive on noise level
 * Richtlinie für den schall-leistungspegel
 * Direttiva sul livello acustico

* 起吊
 * الارتفاع
 * Подъем

* 变幅
 * الحامل المتحرك
 * Перемещение тепежки

* 回转
 * وحدة الادارة
 * Скорость вращения

* 行走
 * السكة الناقلة
 * Перемещение

* 行走
 * السكة الناقلة
 * Перемещение

* 电力要求
 * متطلبات الطاقة
 * Необходимая мощность

* 噪音水平指令
 * توجيهات حول مستوى الضوضاء
 * Директива по уровню шума



ITI GRUAS MACHINERY CO.LTD.
 Birlik Mah. 4.Cad 17/2 Çankaya Ankara
 Tel : 0090 312 496 29 83
 Fax : 0090 312 495 13 66
 Email : info@groupiti.com

www.itigruas.com

